



Roof Tent
Installation Manual
Diesel 310
Dakota 210



Let the adventure's begin...

INSTALLATION MANUAL

PRE INSTALLATION



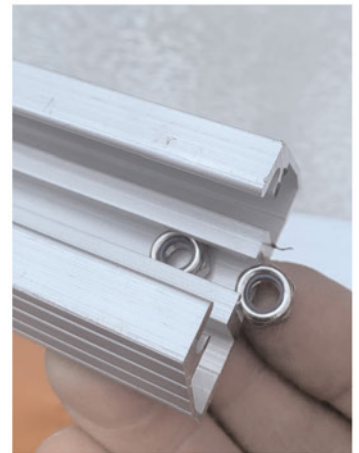
All the tools and attachments you will need to set up your Ox Overland Roof Tent, are neatly packed inside your packaged tent. Mounting Rails, installation kit, ladder and cover.



The roof tent can be installed to the vehicle so that it opens to the rear or either side, This will determine which way the mounting rails are fitted to the tent floor. The mounting rails need to be running at right angles to the roof bars on the vehicle.



If the tent is located at the back of the vehicle, the mounting rails will need to be shortened. To do this place the mounting rails in position, with the mounting rails lined up with the mounting holes in the tent floor. Mark both ends of the rail level with the edge of the tent and cut to length.



Locate the four mounting point holes under the tent floor and lay the tent down with this side facing upwards. Remove protective plastic covering from tent floor.

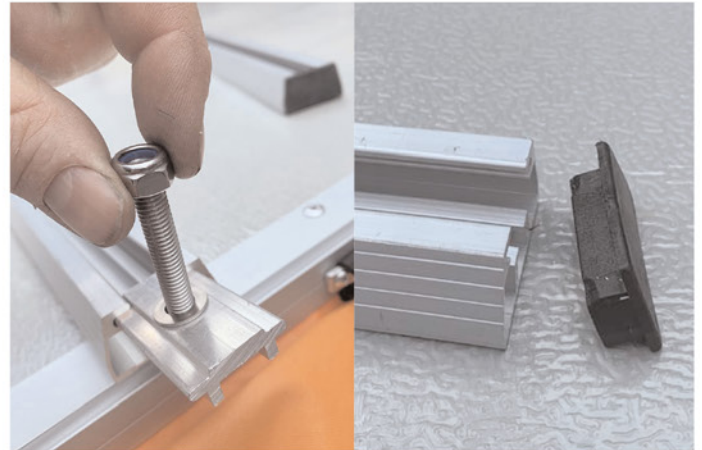
Slide 2 mounting nuts into the mounting rails and align with the holes. Locate the mounting holes under the mattress and insert the 40mm bolts and flat washers from inside out. Tighten the nuts and bolts firmly to attach the mounting rails to the tent floor



oxoverland.co.uk
07815 139603

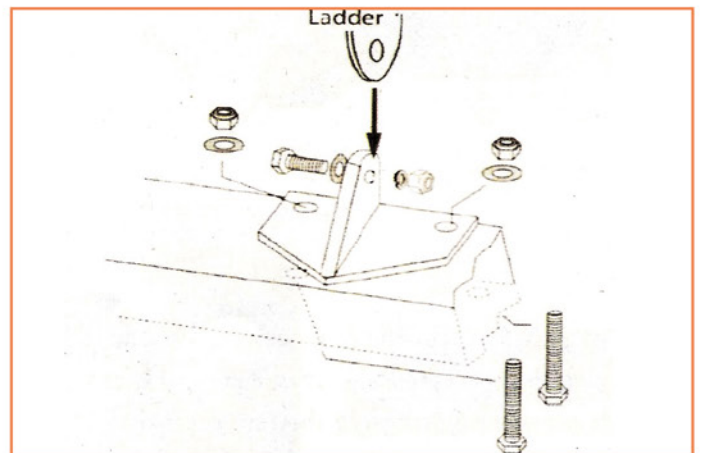
PRE INSTALLATION

Slide the bolted mounting plates into the rail, 4 on each. Install the plastic end caps.

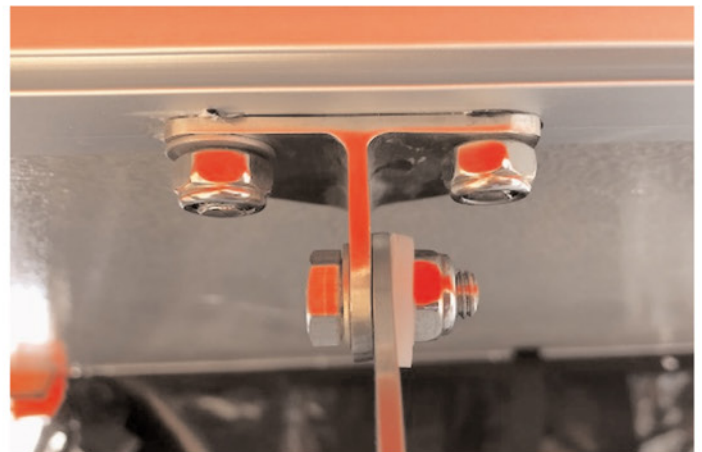


Attaching the ladder

Turn the tent over and find the ladder mounting holes. Attach the ladder brackets as shown



Attach the ladder to the brackets using the bolts, flat washers, and nuts, placing plastic spacers between the ladder mounts and brackets.



Your Ox Overland roof tent is now ready to be fitted to your vehicle.



oxoverland.co.uk
07815 139603

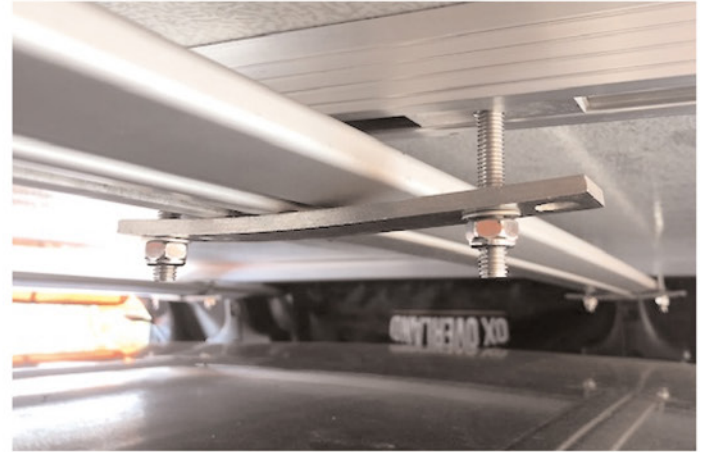
INSTALLATION

It is the responsibility of the installer to ensure the roof rack has an adequate load rating to support the Ox Overland Roof Tent. Tent Weighs approximately 55kg.

Although 2 people can possibly lift the roof tent onto the vehicle, we recommend that 4 people be used due to the weight and size of the tent.

If mounting the tent for rear opening, make sure that the tailgate operation does not interfere with the tent.

When lifting the tent onto the roof of the vehicle, make sure that mounting bolts do not contact the roof as this will cause damage to the vehicle.



The manner in which your roof tent can be attached depends on the type of roof bars fitted to your vehicle. Here is an example of a mounting technique.



Your Ox Overland roof tent comes with a shoe holder bag. To fit this slide the top into the rail at the base of the tent as shown.



oxoverland.co.uk
07815 139603

ROOF TENT SETUP

Unzip tent cover and undo the straps.
Pull it off over to one side of your vehicle.

Undo the straps around the tent and the ladder.

Slide the ladder out and whilst pulling down on the end of the ladder, walk backwards away from the vehicle, allowing the tent to unfold.

When the tent is fully unfolded the ladder should touch the floor. Adjust the ladder to the correct length required.



oxoverland.co.uk
07815 139603

ROOF TENT SETUP

Remove separate pole from inside the tent



Position the pole under the tent opening and push it into the outer corners.



Insert the ends of the pole into the brackets on the corners of the tent base.



Make sure the fly is positioned correctly over the corners of the tent.



Although the tent is fully supported, we recommend the use of guy ropes and pegs incase of potentially windy conditions.



oxoverland.co.uk
07815 139603

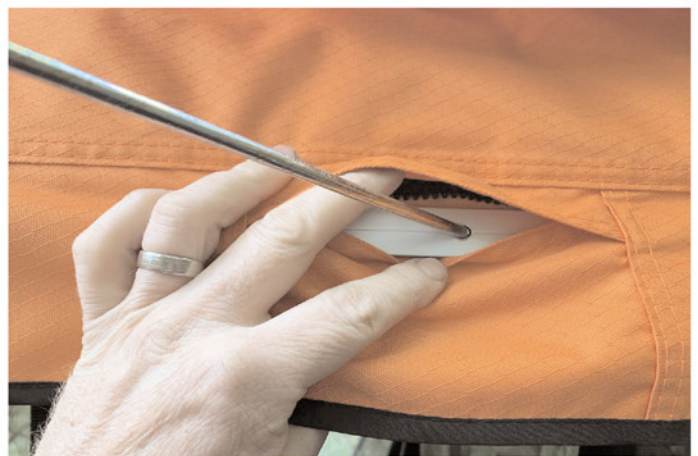
ROOF TENT SETUP

To support the window fly, take a support rod and engage it in the support hole in the tent base.



Flex support rod to engage hook end with the eyelet in the corner of the fly.

Repeat these steps to set up all of the window and door awnings.



Remove all four bungee cords from inside the tent. These should be refitted when packing up the tent.



Let the adventure's begin...



oxoverland.co.uk
07815 139603



PACKING AWAY YOUR ROOF TENT

Pack your roof tent up in reverse order to setup.

Re-attach the elastic cords inside the tent, as this will pull the sides of the tent and make it much easier to fold down.

When attaching the tent cover to the tent, take extreme care not to catch the tent material in the zipper.

CARE & MAINTENANCE

If your Ox Overland roof tent has been packed away wet or has become damp, we recommend that it be aired out to prevent mildew and staining of the material. Open out the roof tent and the windows and doors to give it a good air out.

If your roof tent requires cleaning, we recommend using luke warm soapy water and a clean sponge to wipe down the material. rinse and dry fully before packing away.



oxoverland.co.uk
07815 139603

TERMS & CONDITIONS

Ox Overland will provide warranty to the original purchaser and only the original purchaser of the product, under the following conditions;

Ox Overland will warrant against manufacturing faults and defects in material and workmanship for a period of 12 months from the original purchase date.

Ox Overland reserves the right, at its option, to repair, replace or refund the purchase price of a faulty or defective product or its components, if returned to the place of purchase during the warranty period.

When returning a product for warranty assessment, it must be accompanied with the customer's name, address, contact number, a clear description of the fault and a copy of the original sales receipt detailing the date of purchase.

This warranty does not apply to damage due to accident, misuse, abuse, misapplication, collision, modification, improper installation or lack of improper maintenance. Ox Overland shall not be responsible for the natural breakdown of materials that occurs inevitably with extended use (e.g. UV light damage on tents, exhausted zips).

THE WARRANTY SET FORTH ABOVE IS THE ONLY WARRANTY. There are no other warranties, including but not limited to implied warranties or merchant ability or fitness for a particular purpose.

Any implied warranty which by law may not be excluded, is limited in duration to 12 months, from the date of the original retail purchase of the product.

Ox Overland shall not be liable for special, indirect, incidental or consequential damages (including, but not limited to, lost profits, down time, or loss of use) under any legal theory, even if Ox Overland was advised of the possibility of such damages. Ox Overland will not be liable for any damage caused to the vehicle it is mounted onto, during installation or use.

Ox Overland reserves the right to change product design without notice. In situations where Ox Overland has changed a product design, Ox Overland shall have no obligation to upgrade or otherwise modify previous manufactured products.



oxoverland.co.uk
07815 139603